

OWNER'S MANUAL

ROOM AIR CONDITIONER

Carrier

mini

SAFETY PRECAUTIONS

Please observe the following safety precautions when using the air conditioner.

Failure or negligence in observing these safety precautions could cause fire, electrical shock or personal injury.

Precautions during installation

WARNING

Please ask your sales agent or qualified technician for the installation of your unit. Water leakage, short circuit or fire may occur if you install the unit by yourself.

CAUTION

Please use earth line.

Do not place the earth line near water or gas pipes, lightning-conductor, or earth line of telephone. Improper grounding could cause electric shock.

A circuit breaker should be installed depending on the mounting site of the unit. Without a circuit breaker, the danger of electric shock exists.

Do not install near location where there is flammable gas. The unit may catch fire if flammable gas leaks around it.

Precautions during operation

CAUTION

Avoid an extended period of direct air flow. It could lead to health problems.

Do not modify the length of power cord or use an extension cord. It could cause electrical shock or fire.

Do not attempt to operate the unit with wet hands, this could cause fatal accident.

Do not turn on the unit by inserting the power cord.

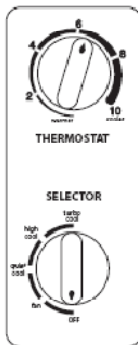
Please switch off the unit and turn off the circuit breaker during cleaning, the high speed fan inside the unit may cause danger.

Turn off the circuit breaker if the unit is not operated for a long period.

Do not splash or direct water to the body of the unit when cleaning as it may cause short circuit.

Do not block the air intake and outlet vanes, cooling performance will be affected.

OPERATION INSTRUCTIONS



Selector knob

OFF

This position stops all operations of the air conditioner.

TURBO COOL

This position provides the maximum air flow for rapid cooling, dehumidifying and dust removing operations (use this position on sultry summer days).

HIGH COOL

This position provides the moderate air flow for quiet cooling, dehumidifying and dust removing operations (use this position when the outdoor temperatures are likely to be lower).

QUIET COOL

This position provides the minimum air flow for quiet cooling, dehumidifying and dust removing operations. (Suitable for night-time use)

FAN ONLY

This position provides fan operation alone for air circulation and dust removal from air.

Thermostat knob

The thermostat automatically starts and stops the operation in order to keep the room temperature at a proper level, and this results in efficient use of power and cooling. Turn the knob clockwise for cooler temperature and counterclockwise for warmer temperature settings.

Air Directional Louvers



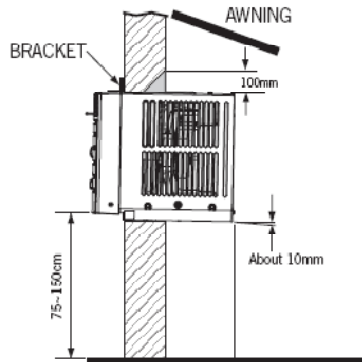
The louvers will allow you to direct the air flow Left or Right throughout the room as needed. Move the Center handle from side to side until the desired Left/Right direction is obtained.

AIR CONDITIONING INSTALLATION

Location

Avoid installing the air conditioner where it is exposed to direct sunlight.

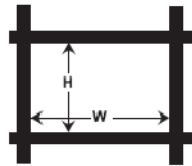
The air conditioner should be installed with a strong external support to minimize noise and vibration and for the purpose of safe installation, repair, replacement and secure positioning.



Note: Unit may be supported by a solid frame from below or by a hanger from a solid overhead support.

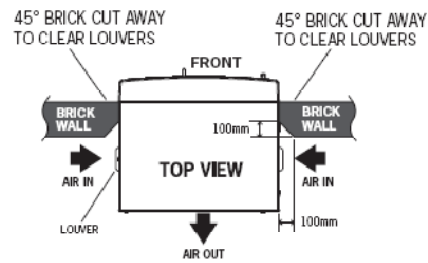
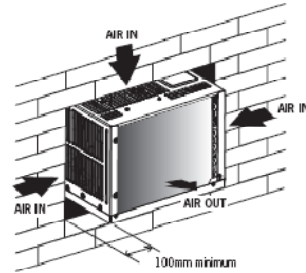
Dimension (Clearances)

Prepare an installation hole slightly bigger than the outer wrapper size.

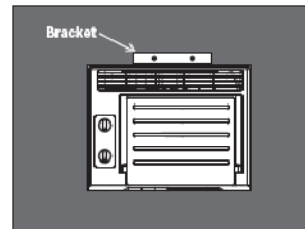


H = 314mm
W = 412mm

Installations of the unit into the wall



Fix the unit with bracket and secure it with screws



CARE AND MAINTENANCE

CAUTION

Clean your air conditioner occasionally to keep it looking new. Be sure to unplug the unit before cleaning to prevent shock or fire hazards.

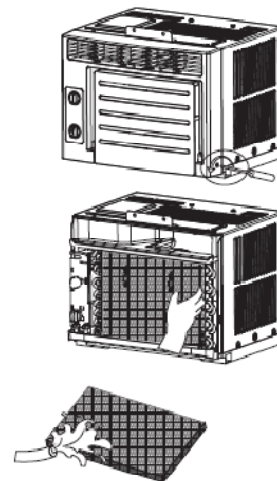
Air Filter Cleaning

If the air filter becomes clogged with dust, smooth air flow is obstructed and cooling efficiency becomes low.

Unscrew the front grille on both sides. Pull the filter out of the unit.


Wash the filter using liquid dishwashing detergent and warm water. Rinse filter thoroughly.

Gently shake excess water from the filter. Be sure the filter is thoroughly dry before replacing.



WARRANTY CERTIFICATE

A warranty Certificate is included with your unit. Warranty coverage becomes effective on the date of sale. Therefore, it is a good idea to keep your bill of sale and warranty in a safe place with your Owner's Handbook.

	PRODUCT WARRANTY CERTIFICATE
ONE YEAR WARRANTY ON PARTS AND LABOR Concepcion-Carrier Air Conditioning Co., warrants this Room Air Conditioner to the original purchaser/user to be free from defects in material and workmanship. We shall, within one year from the date of purchase, repair the unit at no cost to the original purchaser/user using the original parts or their equivalent subject to warranty exclusions.	
WARRANTY EXCLUSIONS Unit subject to misuse, abuse, neglect, accident, alternation, cleaning or servicing by non-CCAC accredited service centers. Unit installed on harsh environment e.g. sea going vessel, port area, power plant, chemical laboratories, kitchen, etc. Abnormal voltage conditions i.e. unstable and or fluctuating voltage. Lack of proper maintenance i.e. regular inspection and cleaning air filters & cooling coils (for non-residential applications). Units not rendered for cleaning once every six months by authorized service center during the duration of warranty period. Improper unit installation i.e. obstructed discharge and fresh air intake, under capacity etc. All direct, indirect or consequential injury, loss or damage arising out of the use or inability to use the product. Force majeure, Acts of God and all other fortuitous events. Units not registered within one (1) year from the date of purchase.	
FOUR YEAR LIMITED COMPRESSOR WARRANTY EXTENSION The compressor (part only, excluding unit pull-out and delivery charges, accessories, labor and expendable material charges) shall be covered by a four (4) year warranty extension subject to the warranty exclusions. No other warranties shall apply.	
CONCEPCION – CARRIER AIR CONDITIONING CO. Km. 20 East Service Road, South Superhighway Alabang, Muntinlupa City	MODEL: _____ SERIAL NO.: _____
(CUSTOMER'S COPY)	

NOTE: To register product warranty, call **i-Assist** at 863-5555 or visit our website: www.ccac.com.ph or fill up and detach Warranty Registration Card and mail. Registration must be done within ten (10) days from the date of purchase

Please affix your proof of purchase here for future reference.



WARRANTY REGISTRATION

OWNER: _____ MODEL: _____
ADDRESS: _____ SERIAL NO.: _____
TEL. NO.: _____ E-MAIL: _____
DEALER/BRANCH: _____ PURCHASE DATE: _____

P/N: 04204910188-00

